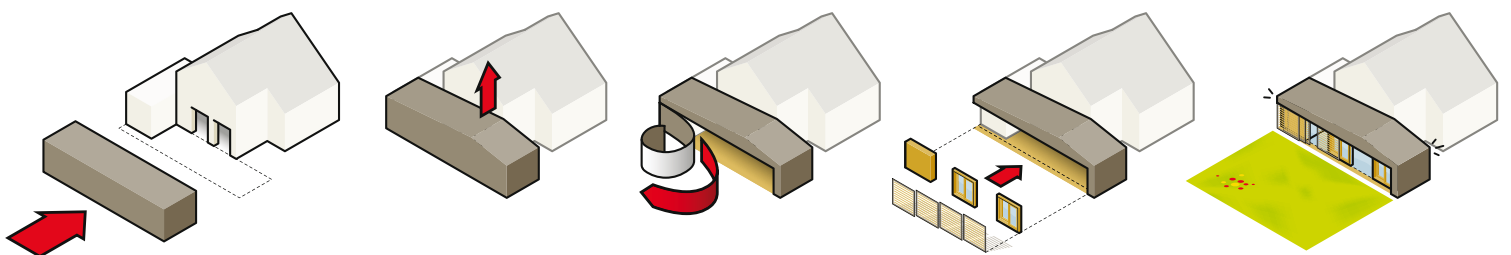




Bakker House extension, Zaltbommel

client Bakker Family
adress Groenwal 19
 5301 JJ Zaltbommel
 The Netherlands
program dwelling extension
gross area 47 m2
building cost -
building time 5 months
finished july 2010

design JagerJanssen architects BNA
 Vijverhofstraat 90
 3032 SN ROTTERDAM
 The Netherlands
designteam Rogier Janssen MSc, architect
 Marijn Boterman MSc, architect
 Alex Jager MSc, architect
advisors MADAR, Delft [construction]
contractor Bouwbedrijf Robbemondt
fotography JagerJanssen architects BNA





Bakker House extension, Zaltbommel

GARDEN LIVING

The extension spans almost the entire width of the garden, a completely glass facade separating living room and garden gives the sensation of living in the garden.

The relatively high solar load on the glass panes is taken care of by movable frames with wooden lamellas. A twelve meter long laminated wooden beam spans in longitudinal direction so no columns are needed in the facade. The moment of force in the beam determines the crease in the roof shape, which seeks to mimic the traditional saddleback roof of the existing house. In addition, this creates a magnificent floor height of more than three meters under the tenon.

The facade is clad with Plato boards. The rough wood of the outer contour is treated with black oil. The receding surfaces are clad with sanded boards and are treated with transparent oil.

more information:

<http://www.jagerjanssen.nl/projecten/uitbreiding-huis-bakker>



siteplan 1:2000



Frameless glass and two well-sized sliding doors make garden and living spaces blend.

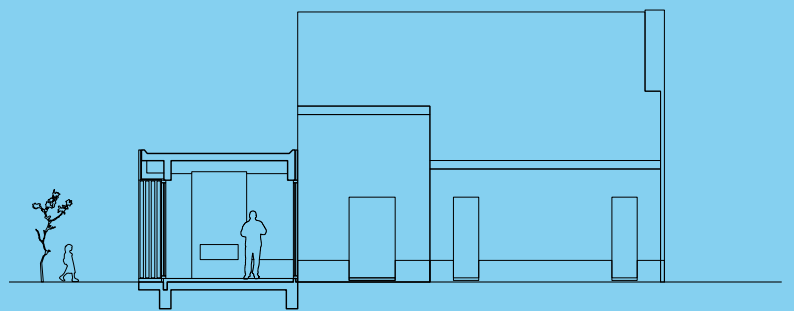
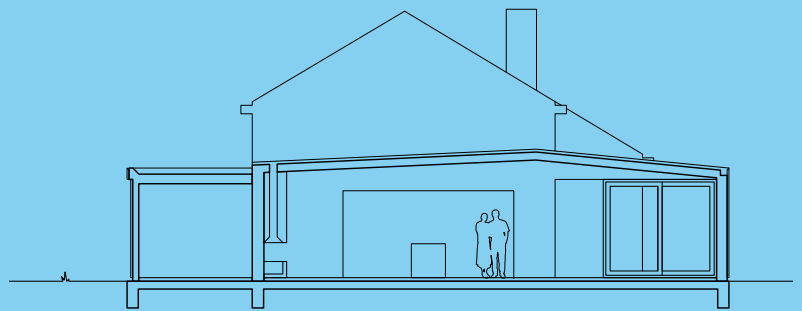
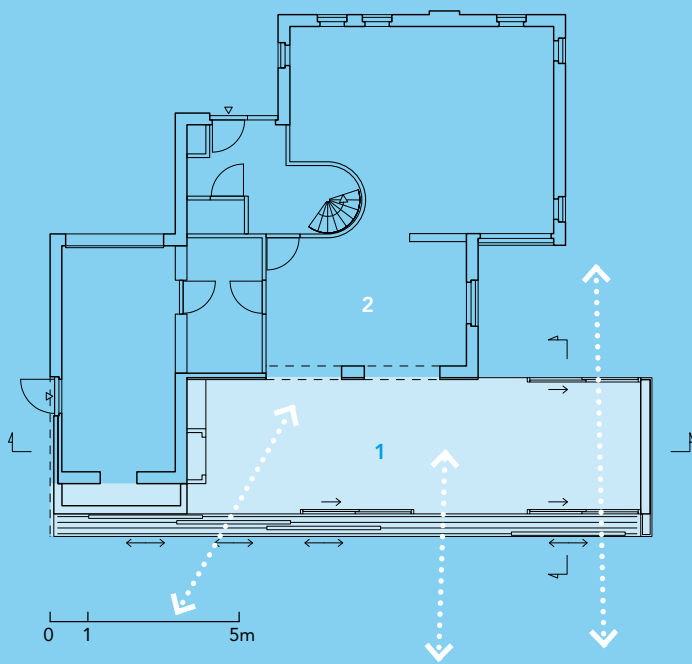


Upper and lower rails are embedded in the finishing of the canopy and porch. The whole facade is clad with Plato wood.



The position of the lamellas allow good view on the garden. The summer sun is blocked out, in winter direct light and solar warmth can enter unobstructed.





floorplan 1:200

- 1 extension
- 2 existing house

sections 1:200

- top longitudinal section
- bottom cross section

