

# House Baetens

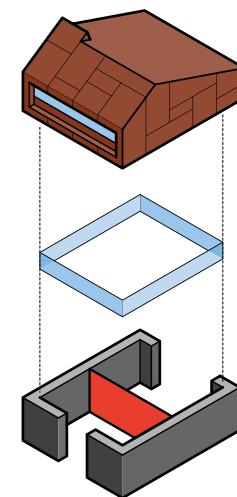
JagerJanssen architects BNA

Architecture Design / 建筑设计: JagerJanssen architects BNA  
Area / 面积: 220 m<sup>2</sup>      Photograph / 摄影: René de Wit

Design Team / 设计团队: Alex Jager MSc, Rogier Janssen MSc, Rob Bergervoet MSc

Location / 地点: Netherlands





Anticipating the arrival of their first child, private constituents Sandor and Judith were looking out for a new home. Together with architect-to-be Rob Bergvoet, JagerJanssen designed the solitary dwelling on the 618 sq. meter plot, part of urban project Westeraam in Elst, The Netherlands.

The constituents aspired a modern starters villa, to house their young family in a spatial fashion. Daily activities are concentrated in a large open space on ground level, enabling unobstructed view on playing infants. In addition, interior office space was required. The private functions are located on the first floor.

The dwelling consists of two layers. The texture of the lower layer is heavy and earthy. Dark bricks with emphasized horizontal seams give the base an abstract and rock-like feel. The base carries the – in multiple respects – lighter top layer, a wooden monolith. The seams in the Trespa HPL cladding facade suggest that the volume consists of massive blocks.

The separation is emphasized by a separating horizontal glass strip. A soft effect is reached by using wobbled double layered translucent plastic plates in the front and rear of the upper floor facade. The front facade looks more formal due to the central

placement of the window frame. In the lower left the flower casing turns around the corner, introducing the less rigid side façade, which culminates in far more transparent rear facade.

The lower floor is constructed around an axis leading from front- to terrace door. Perpendicular to this axis a wall spanning from side to side marks the border between living- and service spaces. The living space is a synoptic space which also contains the separate cooking unit.

The part of the wall that borders to the kitchen contains the built in cooking equipment.

From the landing of the straight staircase, there is a nice view at the triangular window. On the upper floor the infrastructural axis is oriented in the other direction, thus creating an interesting spatialplay.

当时，Sandor和Judith这对恩爱的夫妻为迎接他们第一个宝宝的降生，正寻求一个合适的新家。于是，他们与设计师Rob Bergvoet，JagerJanssen一起，在占地面积为618平方米的地块上，设计了该建筑，使其成为荷兰Elst地区Westeraam城市规划项目的一部分。

这对年轻的夫妇希望能找到一所现代化别墅，作为他们组建家庭的开始，从此在这栋大房子里过上时尚的生

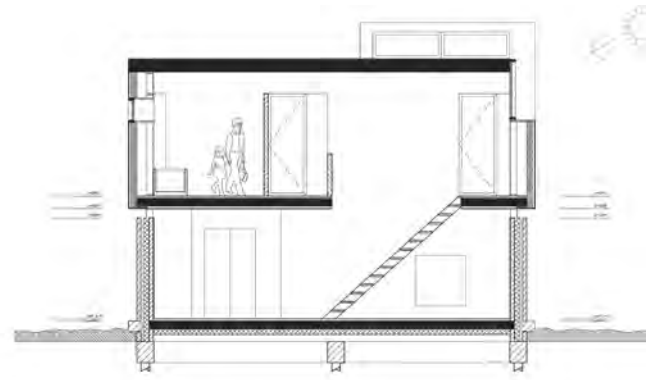
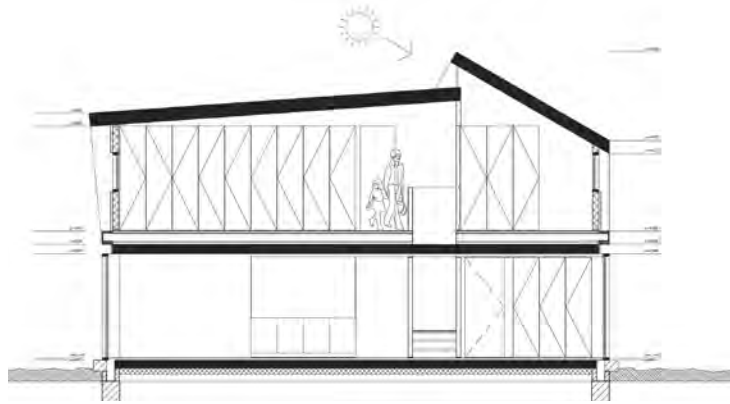
活。日常的生活主要集中在一层宽大的开放空间里，这样能够在相对宽敞的环境中照看玩耍的婴儿。另外，设计师还设计了在家办公的场所，类似于这种私人化的生活设施都集中放置在别墅的一层。

这座别墅分为上下两层。从建筑的质感讲，一层沉稳、传统。一层层密实平行的青砖使该建筑的基础看起来既抽象，又透出砖石古朴的气息。而在这个基层之上，设计展现了建筑多元化的一面：较为轻型的木质上层结构。Trespa HPL底层细密布局的运用，也就决定了上层要使用大块材料作为建筑表面的材料。

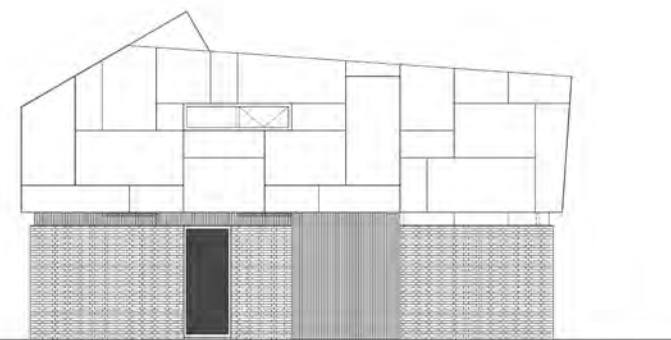
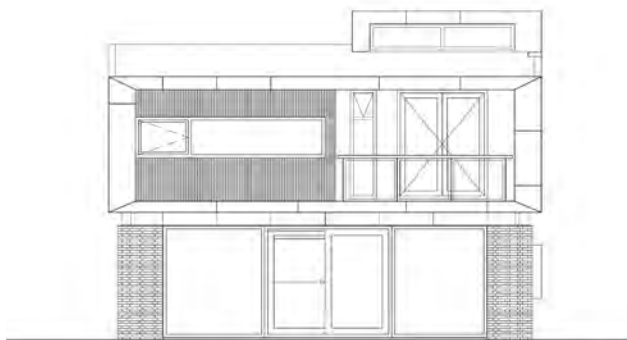
设计师将一个水平的玻璃分隔带安放在上下层之间，强化了分割感。在楼上，前后外墙使用的是磨砂玻璃，这种半透明的形式在一定程度上弱化了该建筑的风格。由于正面的窗框居于整体的中央，因此从正面看，建筑显得格外庄重。在一层左侧的拐角，种植着花草，点缀了僵硬的墙面。

别墅的一层是以房前到阳台门为轴而构建的。与该轴线垂直的一面墙贯穿建筑两侧，将室内的生活区和娱乐区分开。生活区是一个温馨的空间，包括了独立的厨房，靠近厨房的墙面上还安装了内置式厨具。

从一楼走上笔直的台阶，来到一个全新的空间，还可以透过三角形的窗户，领略窗外的美景。楼上基础设施的轴心朝向另一个方向，这样就产生了一个有趣的空间转换。

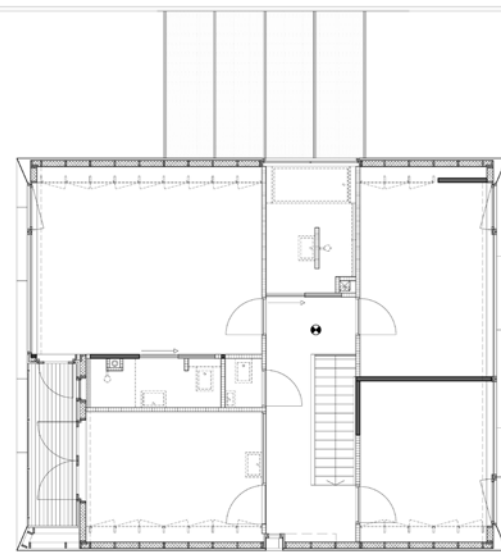
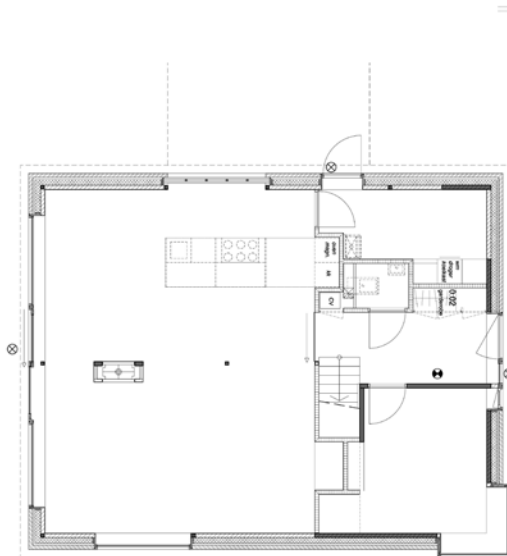


Section/剖面图



Facade/立面图





Plan/平面图

