

# House HanenDick

**Eelde, The Netherlands**

Jagerjanssen architecten BNA

Photography: Rob 't Hart

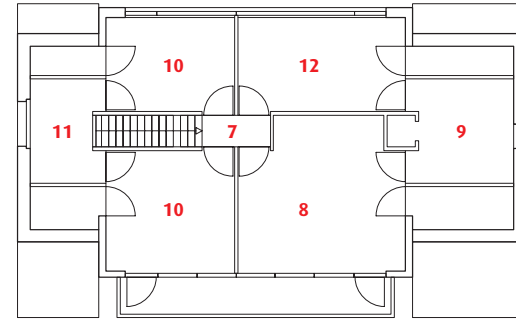
The clients had a number of requests for this new house on one of the oldest streets in Eelde. Existing old trees were to remain untouched while the free-standing building was to accommodate bicycle storage (but no garage), a separate room for piano lessons, separate formal and informal entrances, and at least four bedrooms.

Preserving the character of the village street was a priority, as was linking the house to the footprint of the original farmhouse that formerly occupied the site, and preserving views of a small medieval church nearby.

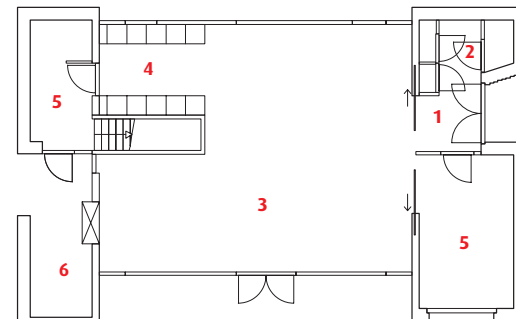
The result is a brick volume, penetrated by a box that seems to have fallen into the main mass. The brick house is kept pure and abstract by continuing the bricks onto the roof; gutters are subtracted from the brick mass and sealed by a metal lattice. Braided masonry is used for the transition from ascending to sloping brickwork on the roof.

The brick volumes house service functions, bicycle storage, and the piano room. The rectangular box contains all the living spaces. The two bedrooms to the garden side share a balcony and there are several opportunities for intriguing vistas, including a view of the church spire from the master bathroom.





Second floor plan



First floor plan

- 1 Entry
- 2 Closet/WC
- 3 Living
- 4 Kitchen
- 5 Scullery
- 6 Bicycle shelter
- 7 Vestibule
- 8 Master bedroom
- 9 Master bathroom
- 10 Bedroom
- 11 Bathroom
- 12 Study

0 5m 